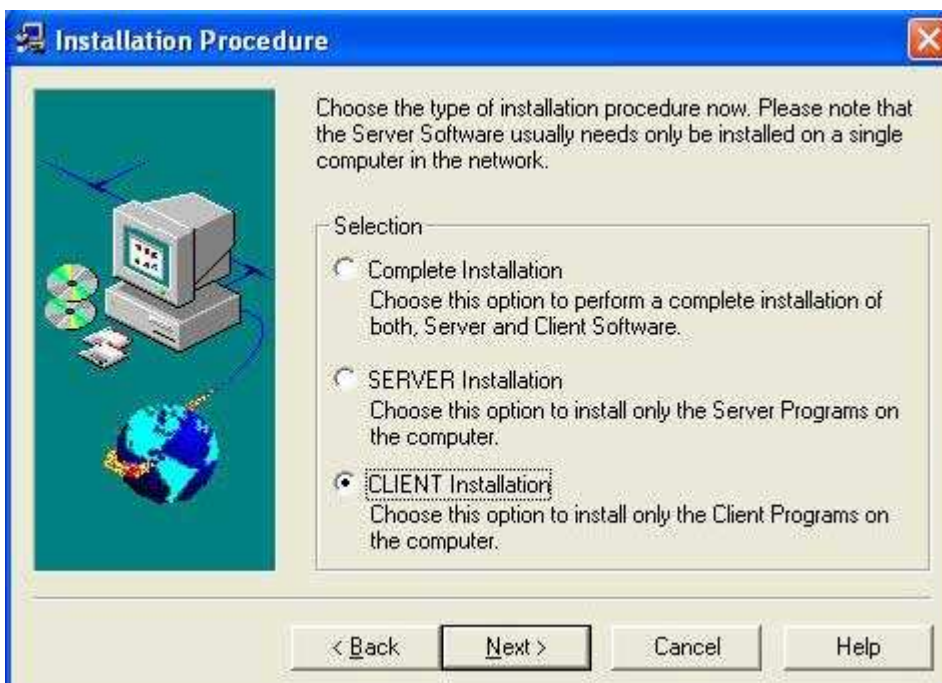




TaylorNetWeb Desktop Fax Client Installation Instructions

Download the fax client program from <http://www.TaylorNetWeb.com/install.htm> . Double click and run the program to install it to your hard drive.



You must select the **CLIENT INSTALLATION**, and then click next.

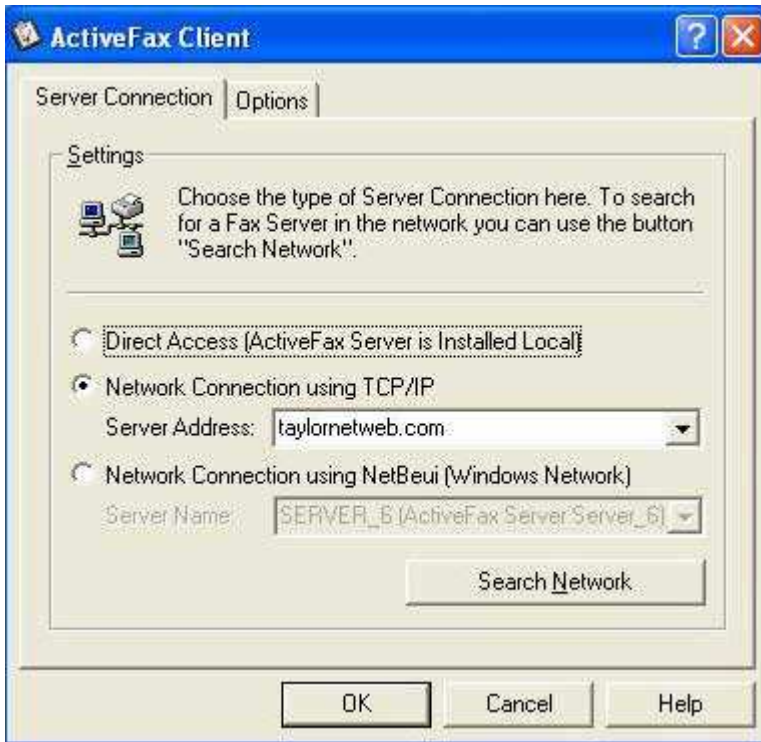


You may select “Online-Documentation” if you wish a faster way to access the help files. You **MUST** have the “Client Software” and “Printer Driver” boxes selected for the program to work.

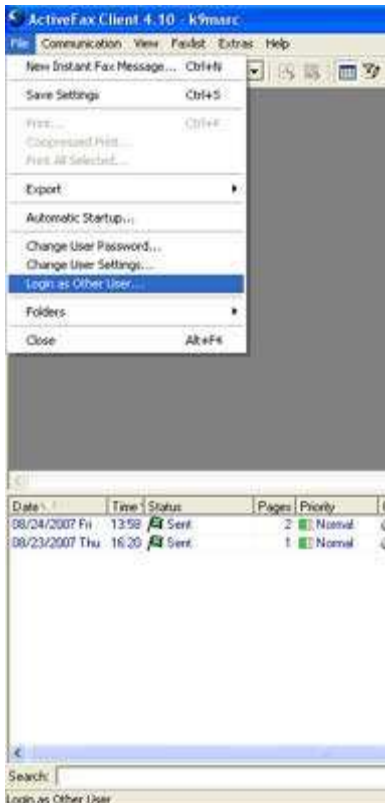


The auto start up is optional (I don't use it).

Your program will run and you will be asked to add the network information below.



Select the second setting and enter the server address as shown above. You do not need to alter the settings in the Options tab. The program is now installed on your system. You will need to add your user name and password which will be provided to you on request. Send an email to Staff@TaylorNetWeb.com and request your user name and password if you do not already have it.



Select "Login as Other User"

The user name and password box will come up.



Enter your user name and password (you can change your password anytime).
Click OK!

You're done! Refer to the help files or email us at Tech.Support@TaylorNetWeb.com if you have any trouble!